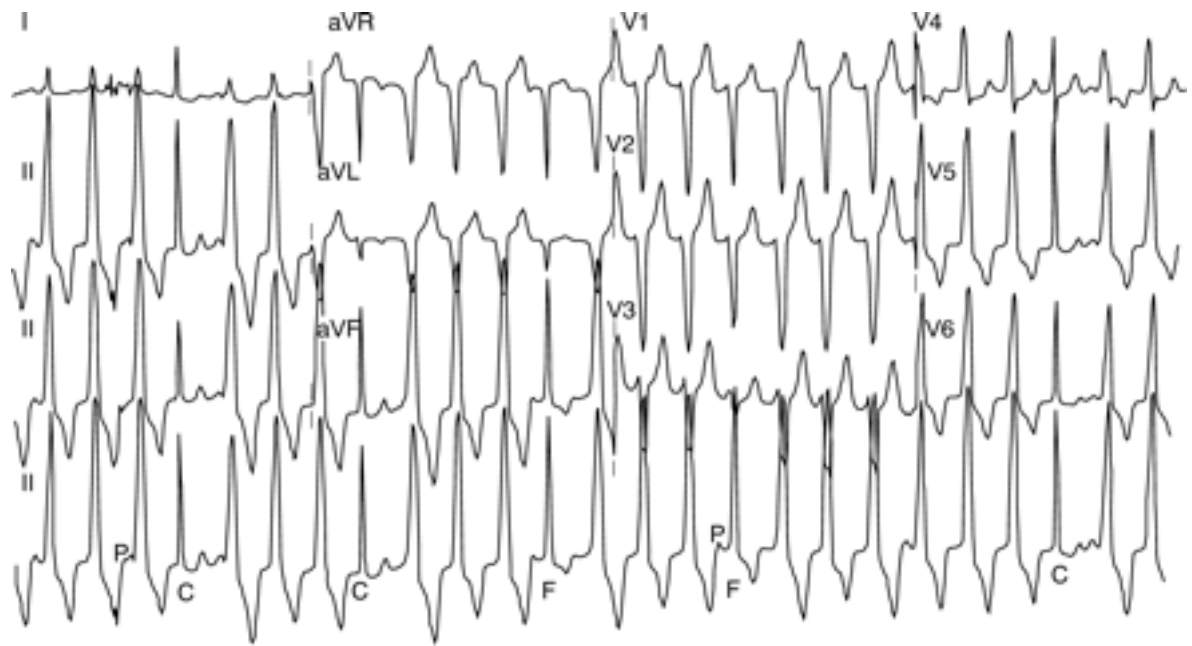


Broad complex tachy



A 57 yr old woman presents to your department after sudden onset of dizziness about 20 minutes ago. She has had 3 similar episodes over the past 12 months. Initially her ECG is normal, but her symptoms return and her ECG is as follows

What is the diagnosis for this ECG? (1marks)

Ventricular Tachycardia

What is an important differential diagnosis? (1 mark)

SVT+ aberrant conduction

Name the features marked P, C and F and describe them. (3 marks)

Capture Beat: Narrow QRS followed by an upright T wave

Fusion beat: Wider complexes followed by inverted T waves

AV dissociation: p waves seen throughout ECG, not related to QRS complexes

What adverse signs would cause you to consider electrical cardioversion? 2 marks

SBP < 90

Chest pain

Heart Failure

Rate >150/min

If adverse signs are not present, give 2 treatment options (3 marks)

Amiodarone 150 mg iv over 10 minutes

Or lidocaine 50 mg over 2 mins repeated every 5 mins to 200mg