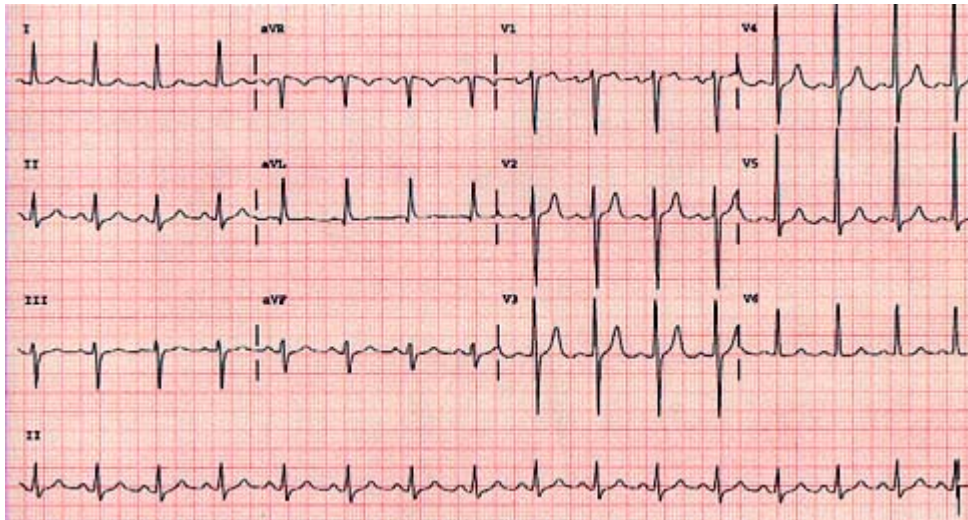


ECG Axis and LVH



On this ECG

1. Comment on the ECG

Left axis deviation with voltage criteria for LVH

2. Give three causes of Left axis deviation

inferior myocardial infarction, ventricular pre-excitation, hyperkalaemia, tricuspid atresia, ostium primum atrial septal defect, artificial cardiac pacing, hypertension, aortic stenosis or regurgitation, subaortic stenosis, mitral regurgitation, and left ventricular conduction defects

3. Give three causes of Right axis deviation

COPD, pulmonary emboli, valvular disease, septal defects, and pulmonary hypertension.

4. What are the ECG criteria for Left Ventricular Hypertrophy

S wave in V2 plus R wave in V5 > 35.

5. Give two causes of Left Ventricular Hypertrophy

Aortic stenosis, hypertension