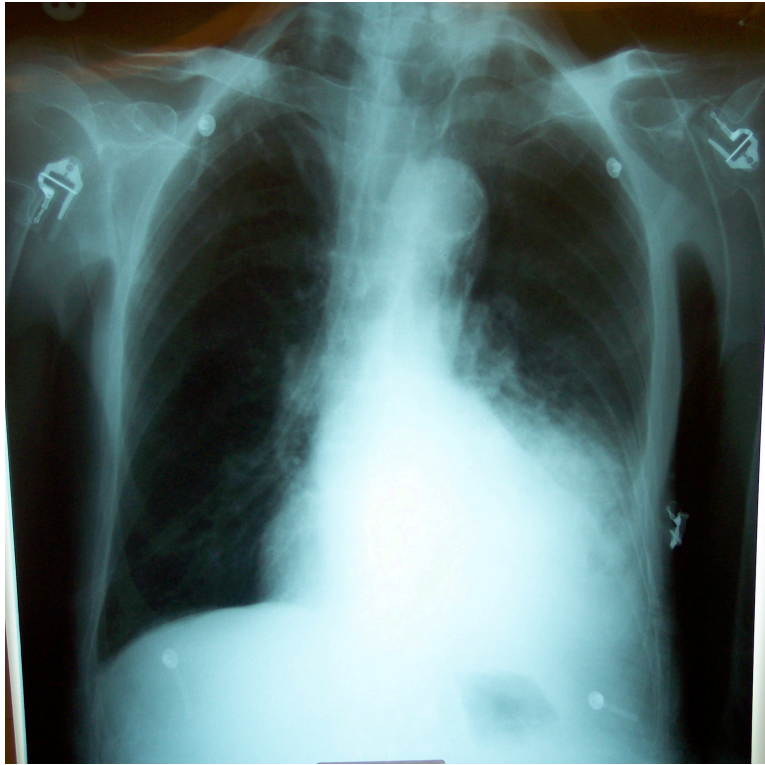


A 68 year old male is brought to the ED by ambulance. He has become confused and unwell over the last 2/7. He is clearly confused. His temperature is 38° C. He has a pulse rate of 110/min. His oxygen saturation on air is 91%. He has no other PMH of note other than mild OA. He takes no regular medication and is a non smoker. He has no allergies.

Comment on his CXR (1)



Left lower lobe consolidation

How do we assess severity in community acquired pneumonia and which other information do we require to complete the assessment of severity?(4)

CURB-65

Urea > 7

Respiratory rate >30/min

Bp (Systolic <90mmHg or diastolic <60mmHg)

Outline your management of this patient. (3)

Oxygen, 15l/min by rebreather mask. Sats monitoring

Iv access. Iv fluids 1l saline over 1hour

FBC, U&E, Blood Cultures, Sputum culture

ABG

IV antibiotics (hospital, severe so Augmentin or 3rd gen cephalosporin plus Clarithromycin)

Refer HDU/ICU

½ mark each.

Give 2 pulmonary complications of community acquired pneumonia. (2)

Lung abscess and Empyema or parapneumonic pleural effusion