

House fire

A 45 year old man is brought in having jumped from a first floor window in a house fire. He is immobilised on a spinal board. HR 126, BP 100/40, SaO₂ 92% in air, GCS E3V3M5

What factors would you consider in deciding the management of this patient's airway? (4 marks)

Stridor/immediate airway compromise

Facial burns

Singeing of eyebrows/nose hairs

Carbon deposits on oropharynx

Carbonaceous sputum

Hoarse voice

Hx impaired mentation/confined in burning building

Explosion with burns to head and torso

COHb >10%

Primary survey does not reveal any injury. The patient has significant burns to his upper limbs and face and head. You arrange for the patient to be intubated. ABG reveals a COHb of 40%

What is a normal COHb? (1 mark)

Up to 15% in a smoker

What symptoms might be expected in a patient with raised COHb? (1 mark)

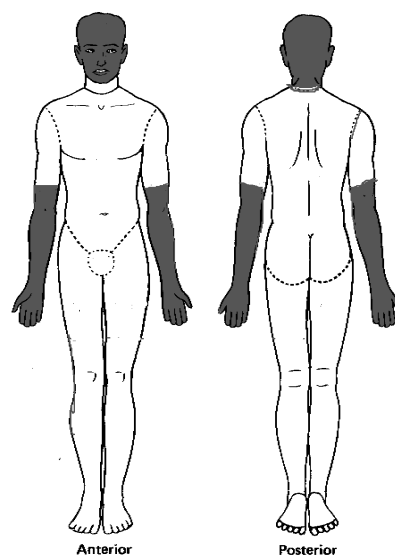
Headache and nausea, Confusion, Coma, Death

What is the half life of CO Hb On air and On 100% O₂? (2 marks)

Air 4 hrs

100% O₂ 40 mins

He has partial thickness burns as shown. Estimate the area (2 marks)



Arm = 9%. Head = 9%. Whole head + 2x 2/3 arms = 9+6+6+21%