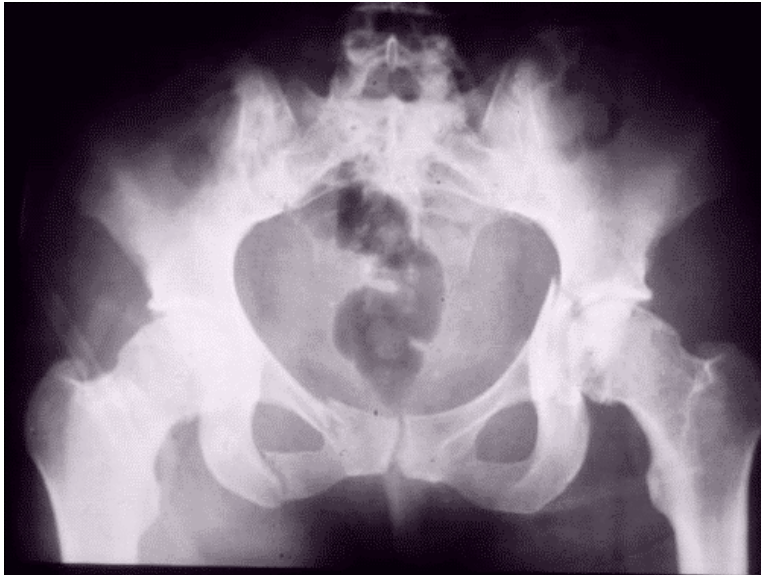


## Pelvic fracture



A 27 year old motorcyclist has lost control of his machine and hit a tree. Lateral c-spine and CXR are normal, but his pelvic view is as shown.

Describe this X-Ray (3 marks)

*Fracture of L acetabulum*

*Fracture of R pubic rami ant and post*

What injuries would be possible with this injury? (4 marks)

*Bleeding of pelvic vessels*

*Urethral tear*

*Nerve injury*

*Rectal injury*

Outline your management of this patient if they were in hypovolaemic shock (3 marks)

*Fluid resuscitation*

*Stabilise pelvis with straps*

*Ortho for exfix*

*? embolisation*

Asked Nov 2002